



Piano: in MDF, ribassato, ricoperto con uno strato di cemento che dona il caratteristico effetto ondulato, successivamente laccato lucido nei colori Cappuccino, Castagna, Army Green, Malachite e Moka.

Sottopiano strutturale in stratificato di MDF e alluminio, spessore mm 12, verniciato nero opaco.

Gambe: in massello di frassino laccato a poro aperto colore Liquirizia.

Piedino regolabile con scivolante in ABS.

Top: in low-profile MDF, covered with a layer of cement that lends it the typical wavy effect, with glossy lacquer finish in Cappuccino, Chestnut, Army Green, Malachite or Moka colour.

Structural underpanel in laminated MDF and aluminium, 12 mm thick, varnished matt black.

Legs: in solid ash with open-pore Licorice colour lacquer finish.

Adjustable feet with protective ABS glides.

Tischplatte: aus MDF, vertieft, überzogen mit einer Zementschicht, die ihr den charakteristischen Welleneffekt verleiht, und anschließend glänzend lackiert in den Farben Cappuccino, Kastanie, Armeegrün, Malachit und Mokka. Unterplatte aus MDF-Platte und Aluminium, Stärke 12 mm, matt lackiert in Schwarz.

Beine: aus massiver Esche mit offenerporiger Lackierung in der Farbe Lakritze.

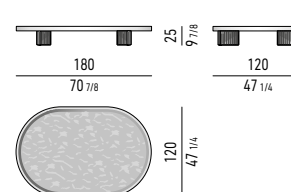
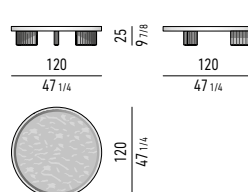
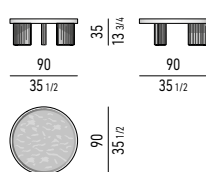
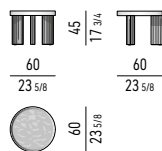
Höhenverstellbarer Fuß mit Gleiter aus ABS.

Plateau : en MDF, surbaissé, recouvert d'une couche de ciment qui donne un effet ondulé caractéristique, puis laqué brillant couleur Cappuccino, Châtaigne, Army Green, Malachite ou Moka.

Panneau structurel en stratifié de MDF et aluminium, épaisseur 12 mm, peint en noir mat.

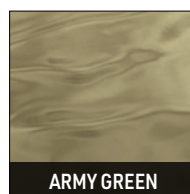
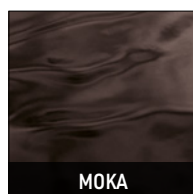
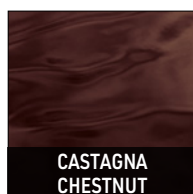
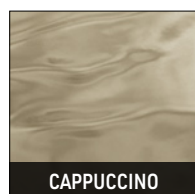
Pieds : en frêne massif laqué à pores ouverts couleur Réglisse.

Embouts de pieds réglables avec patins glisseurs en ABS.



PIANO TOP

LACCATO LUCIDO ONDULATO WAVY GLOSSY LACQUERED



GAMBE LEGS

FRASSINO ASH

