

## SHEARLING

DESIGN RODOLFO DORDONI

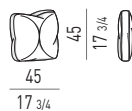


Cuscino con imbottitura 100% piuma d'oca canalizzata (certificata Assopiuma, Etichetta Oro). Rivestimento in pelle shearling, disponibili nei colori Beige, Marrone e Verde.

Cushion 100% channeled goose down (Assopiuma certified, Gold Label). Cover in leather shearling, in the colours Beige, Brown and Green.

Kissen mit Füllung aus 100% kanalisier-ten Gänsedaunen in Kassettensteppung (Gold Label, zertifiziert von Assopiuma). Shearling Leder Kissen in den Farben Beige, Braun und Grün.

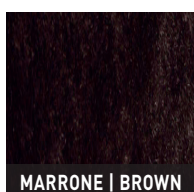
Coussin 100% en plume d'oie à secteurs (certifiée Assopiuma, Étiquette Or). Coussins en cuir shearling, dans les couleurs Beige, Marron et Vert.



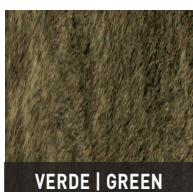
### SHEARLING



BEIGE



MARRONE | BROWN



VERDE | GREEN