

DYLAN

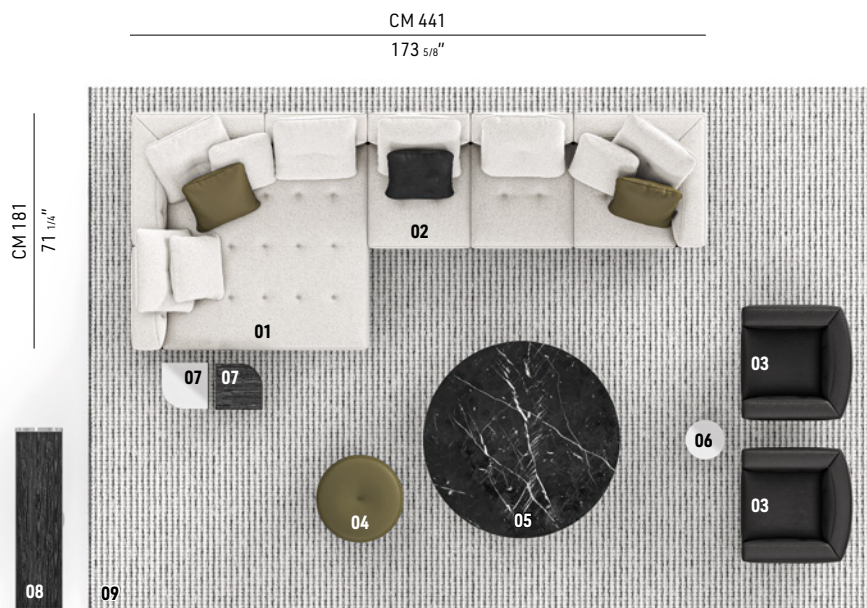
RODOLFO DORDONI DESIGN

The instinct for the continuity of shapes, and lines, and for consistency of language and style typical of Minotti's modus operandi, is embodied in the Dylan modular seating system. A multifaceted and versatile lexicon in which the rigour of forms is combined with their ability to accommodate. Every detail of Dylan combines the tailoring of the upholstery with the multifaceted vision of a rational architecture that passes from the space to the furniture, balancing and perfectly integrating it with the contemporary way of interpreting and experiencing living spaces.

The arrangement depicted is just one example of the many different compositions possible with our seating systems. We suggest that you contact the nearest Minotti dealer to explore the options most suited to your needs and select the upholstery of your choice from the exclusive Minotti collection.



DYLAN - Arrangement 06



SOFA ARRANGEMENT

- 01 DYLAN**
CHAISE-LONGUE SX - SEAT 77
CM 181X181 H82
- 02 DYLAN**
ELEMENT WITH 1 ARMREST DX - SEAT 77
CM 260X102 H82

FURNISHING ACCESSORIES

- 03 SALLY**
SWIVEL ARMCHAIRS CM 86X84 H63
- 04 TORII BOLD**
SMALL OTTOMAN Ø CM 65 H41
- 05 LELONG 23**
COFFEE TABLE Ø CM 150 H28
- 06 ANISH**
SIDE TABLE Ø CM 30 H45
- 07 JAMES**
SIDE TABLES CM 35X35 H45
- 08 PILOTIS CONSOLLE**
CONSOLE TABLE CM 140X36 H75
- 09 KOBE**
RUG CM 600X400

Furnishing accessories



03
SALLY
SWIVEL ARMCHAIRS CM 86X84 H63



04
TORII BOLD
SMALL OTTOMAN Ø CM 65 H41



05
LELONG 23
COFFEE TABLE Ø CM 150 H28



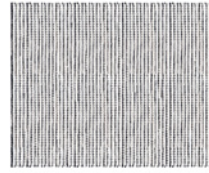
06
ANISH
SIDE TABLE Ø CM 30 H45



07
JAMES
SIDE TABLES CM 35X35 H45



08
PILOTIS CONSOLLE
CONSOLE TABLE CM 140X36 H75



09
KOBE
RUG CM 600X400