

## RITTER

DESIGN RODOLFO DORDONI



**Struttura:** in MDF da mm 20, incollata a 45°, con angoli smussati e disponibile nelle seguenti finiture:

- laccato lucido nei colori Corten, Petrolio o Fango;  
- impiallacciato wengé spazzolato, laccato a poro aperto color moka 2 mm.

**Base:** in MDF, altezza mm 65, verniciata Nero opaco, regolabile.

Scivolante protettivo in Hytrel® (gomma morbida antigraffio).

**Structure:** 20 mm MDF, glued at a 45° angle, with beveled corners and available in the following finishes:

- Corten, Petroleum or Mud color glossy lacquer finish;  
- 2 mm brushed wenge veneer, open pore moka colour lacquer finish.

**Base:** in MDF, 65 mm high, painted matt black, adjustable.

Protective Hytrel® (soft, scratchproof rubber) slides.

**Struktur:** Aus MDF, Dicke 20 mm, im 45°Winkel verklebt, mit abgerundeten Ecken, in folgenden Ausführungen erhältlich:

- glänzend lackiert in den Farben Corten, Petroleum oder Schlamm;  
- Stärke 2 mm, offenporig mokkafarbig lackiertem gebürstetem Wenge.

**Grundgestell:** Aus MDF, Höhe 65 mm, mattschwarz lackiert, verstellbar.

Gleitschutz aus Hytrel® (weicher kratzfester Gummi).

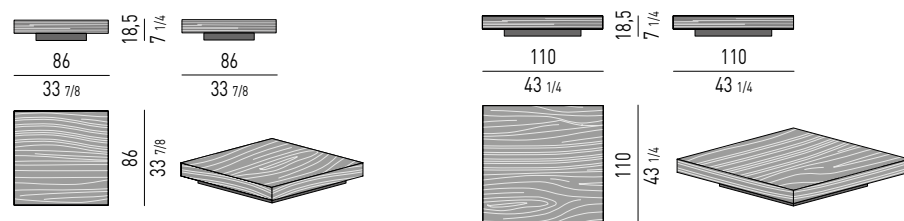
**Structure :** en MDF de 20 mm, collée à 45°, angles arrondis, disponible dans les finitions suivantes :

- laqué brillant dans les couleurs Corten, Pétrole ou Boue ;  
- épaisseur 2 mm, plaqué wengé brossé, laqué à pores ouverts couleur moka.

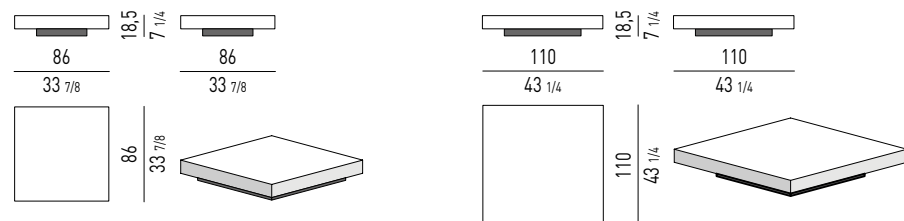
**Base :** en MDF, hauteur 65 mm, peinture Noir mat, réglable.

Patins glisseurs en Hytrel® (caoutchouc souple anti-rayure).

### STRUTTURA WENGÉ SPAZZOLATO COLOR MOKA | BRUSHED WENGE MOKA COLOUR STRUCTURE

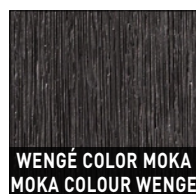


### STRUTTURA LACCATO LUCIDO | GLOSSY LACQUERED STRUCTURE



#### FINITURA STRUTTURA STRUCTURE FINISH

##### LEGNO | WOOD



##### LACCATO LUCIDO | GLOSSY LACQUERED



#### FINITURA BASE BASE FINISH

##### MDF

