

JOHNS LOW

DESIGN RODOLFO DORDONI



Struttura: in legno tamburato spessore 70 mm. Nei contenitori 250 cm e 300 cm è presente una spalla centrale, 46x2 cm, rivestita in acciaio black-mirror.

Finiture:

- laccato opaco Moka antigraffio;
- rovere laccato Moka a poro aperto;
- rovere tinto Tabacco a poro aperto.

Structure: made of honeycomb wood 70 mm in thickness. Sideboards 250 cm and 300 cm are provided with central side panel 46x2 cm, covered in glossy reflective steel.

Finishes:

- scratch-proof mat Moka lacquered finish;
- oak with open pore Moka lacquered finish;
- oak with open pore Tobacco stained finish.

Gestell: 70 mm starkes Furnierholz-gestell. Die Schaeuelemente 250 cm und 300 cm vorsehen eine Mittelwangen, 46x2 cm, mit glänzendem Stahlblech überzogen.

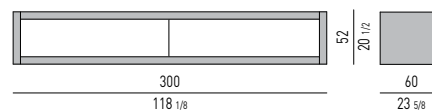
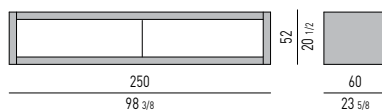
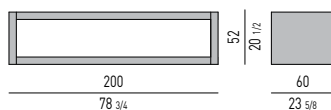
Ausführungen:

- kratzfesten matt Mokka lackiert;
- offenporig mokkafarbig lackierte Eiche;
- offenporig tabakfarbig Eichenfurnier.

Structure : en bois contreplaqué 70 mm d'épaisseur. Les éléments de rangement 250 cm et 300 cm prévoient un côté central, 46x2 cm, revêtu en acier poli.

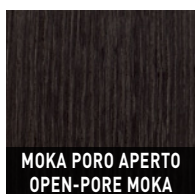
Finitions:

- lacqué antiéraflure Moka mat;
- chêne rouvre laqué Moka pore ouvert;
- chêne rouvre teint Tabac pore ouvert.

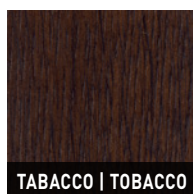


FINITURE STRUTTURA STRUCTURE FINISHES

ROVERE | OAK



MOKA PORO APERTO
OPEN-PORE MOKA



TABACCO | TOBACCO

LACCATO OPACO | MATT LACQUERED



MOKA ANTIGRAFFIO
SCRATCH-PROOF MOKA