

## HARVEY LINE

DESIGN RODOLFO DORDONI



**Struttura:** mobili realizzati con struttura in legno spessore 20 mm, top assemblato a 45° alle spalle laterali.

**Ante:** in legno, spessore 30 mm con maniglia incassata in metallo, finitura Black-Nickel.

**Cassetti:** con guide Blum Motion, finitura interna rovere laccato Moka a poro aperto e maniglia in metallo, finitura Black-Nickel.

**Base:** appoggio a terra tramite base in metallo da 10x50 mm laccata semilucida color Petro (tonalità ideata da Minotti Studio) e piedini tecnici regolabili.

**Finiture:** laccato lucido nei colori Bianco, Sand, Fango, Moka, Petrolio, Grigio Stone o Granito oppure in rovere laccato Moka a poro aperto.

**Structure:** cabinets with wood frames 20 mm in thickness; tops mounted to sides at an angle of 45 degrees.

**Doors:** wood doors 30 mm in thickness, with built-in metal handles; Black-Nickel finish.

**Drawers:** with Blum Motion guides; interior open-pore Moka lacquered oak finish; metal handles, Black-Nickel finish.

**Base:** metal base, 10x50 mm, lacquered in semigloss Pewter color (shade devised by Minotti Studio); adjustable technical feet.

**Finishes:** glossy lacquered in White, Sand, Mud, Moka, Petroleum, Stone Grey or Granite and colors or finished in open-pore Moka lacquered oak.

**Gestell:** Möbel mit einem 20 mm dickem Holzgestell, 45°-Montage des Ablageelements an den Seitenwänden.

**Türen:** Holzflügel, Dicke 30 mm mit eingelassenem Metallgriff, Black-Nickel-Finish.

**Schubladen:** mit Blum Motion Führungen, Innenfinish aus Eiche, offenporig lackiert in Mokka, und Metallgriff im Black-Nickel-Finish.

**Grundgestell:** Die Auflage auf dem Boden erfolgt durch ein 10x50 mm starkes Metallgestell mit zinnfarbendem Halbglanz-Lack-Finish und technische (von Minotti Studio erfundene Farbton), höhenverstellbare Füße.

**Ausführungen:** Glanzlackierung in den Farben Weiß, Sand, Schlamm, Mokka, Petroleum, Steingrau oder Granit aus offenporig in Mokka lackiertem Eichenfurnier.

**Structure :** meubles réalisés avec structure en bois de 20 mm d'épaisseur, plateau assemblé à 45° aux épaulements latéraux.

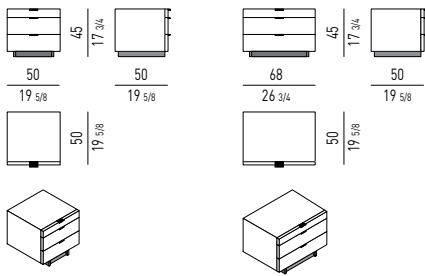
**Portes :** en bois, épaisseur 30 mm avec poignée encastrée en métal, finition Black-Nickel.

**Tiroirs :** avec glissières Blum Motion, finition interne rovere laqué Moka à pore ouvert et poignée en métal, finition Black-Nickel.

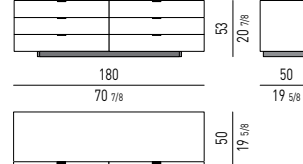
**Base :** piètement avec base en métal 10x50 mm laquée semi-brillante couleur Étain (tonalité conçue par Minotti Studio) et pieds techniques réglables.

**Finitions :** laquées brillantes, couleurs Blanc, Sand, Boue, Moka, Pétrole, Gris Stone ou Granit ou bien en chêne laqué Moka à pore ouvert.

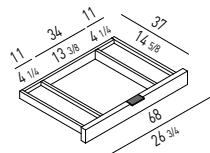
### COMODINI | NIGHTSTANDS



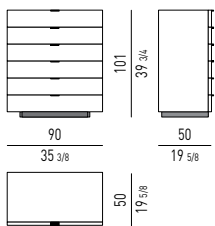
### CASSETTIERA | CHEST OF DRAWERS



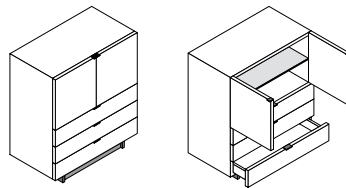
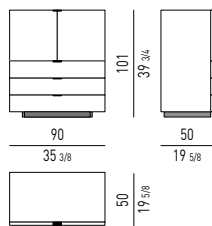
### SPAZIO UTILE INTERNO CASSETTO DRAWER INTERNAL DIMENSION



### CASSETTIERA VERTICALE VERTICAL CHEST OF DRAWERS

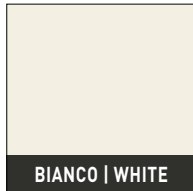


### CONTENITORE VERTICALE VERTICAL CABINET



## FINITURE STRUTTURA | STRUCTURE FINISHES

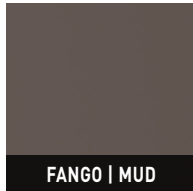
### LACCATO LUCIDO | GLOSSY LACQUERED



BIANCO | WHITE



SAND



FANGO | MUD



MOKA



PETROLIO  
PETROLEUM

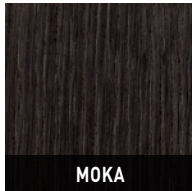


GRIGIO STONE  
STONE GREY



GRANITO | GRANITE

### ROVERE | OAK



MOKA

## FINITURA BASE BASE FINISH

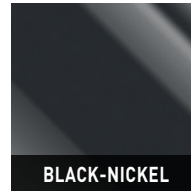
### METALLO | METAL



PELTRO | PEWTER

## FINITURA MANIGLIA HANDLE FINISH

### METALLO | METAL



BLACK-NICKEL



CM 50X50 H45  
INCHES 19<sup>5/8</sup>X19<sup>5/8</sup> H17<sup>3/4</sup>



CM 68X50 H45  
INCHES 26<sup>3/4</sup>X19<sup>5/8</sup> H17<sup>3/4</sup>



CM 180X50 H53  
INCHES 70<sup>7/8</sup>X19<sup>5/8</sup> H20<sup>7/8</sup>



CM 90X50 H101  
INCHES 35<sup>3/8</sup>X19<sup>5/8</sup> H39<sup>3/4</sup>



CM 90X50 H101  
INCHES 35<sup>3/8</sup>X19<sup>5/8</sup> H39<sup>3/4</sup>